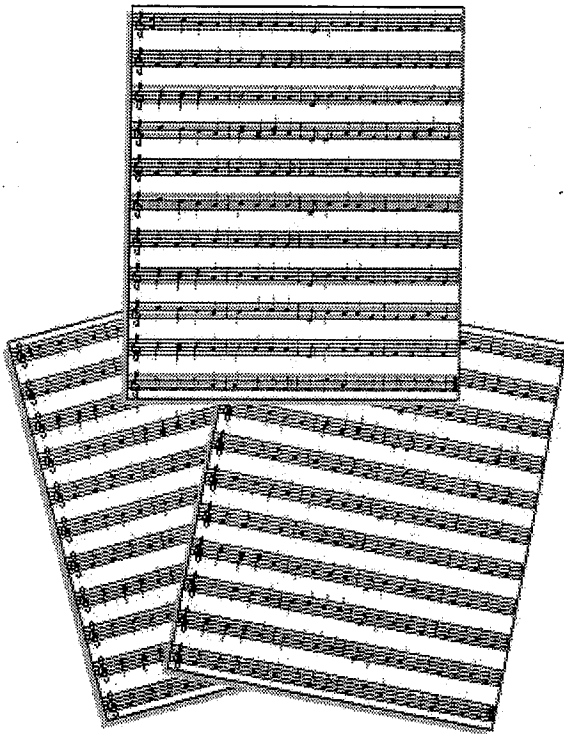


Review Worksheet #14

Section 1 - Multiple Choice

For question 1

Keisha and Santo have decided to sign up for piano lessons. There are 2 options in town. Mike's Ivory Ticklers charges \$124 to join and then there is a \$36 monthly fee. Margaret's Musical Emporium charges \$186 to join and there is an \$18 monthly fee.



1)

Which expression can be used to determine the first year's costs for enrolling at Mike's Ivory Ticklers?

(a) $186 + 18 \times 12$

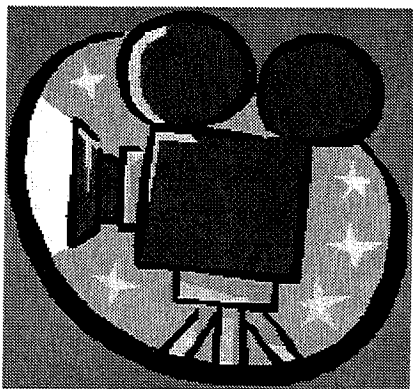
(b) $124 + 36 \times 12$

(c) $(124 + 36) \times 12$

(d) $(186 + 18) \times 12$

For question 2

Ivan's movie camera needs to be repaired. He calls a repair shop and they inform him that it will cost \$45 for the repairman to come to his house and then \$32 for each hour the repairman works on the camera.



2)

Determine the cost of a repair that lasts 2 hours and 45 minutes.

(a) \$109

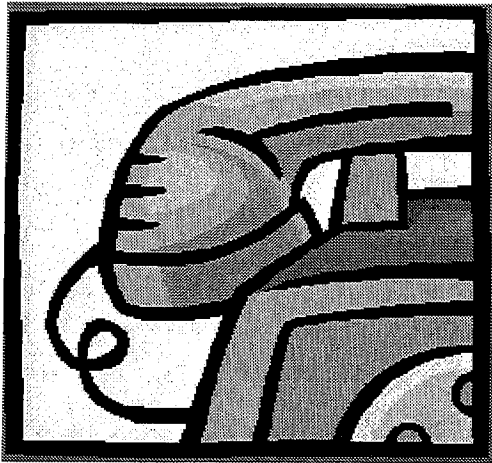
(b) \$133

(c) \$141

(d) \$212

For question 3

You need to make a collect call and must choose a long-distance phone carrier. You have two choices. Company A charges \$1.38 for the first minute and \$.64 for each additional minute. Company B charges \$2.64 for the first minute and \$.58 for each additional minute.



3)

Find the cost of a 6-minute phone call using company A.

- (a) \$5.22
- (b) \$4.58
- (c) \$3.94
- (d) \$3.30

For questions 4-5

A plumber charges a flat rate of \$30 to go on a house call and \$40 per hour for his work.



- 4) How much would the plumber earn if he went on a house call and worked 4 hours?
- (a) \$70
 - (b) \$160
 - (c) \$190
 - (d) \$280
- 5) How much would the plumber earn if he went on a house call and worked 2 hours and 15 minutes?
- (a) \$110
 - (b) \$120
 - (c) \$130
 - (d) \$140
- 6) Mary Ann has $4\frac{1}{2}$ hours in her schedule to go shopping. She found out that the mall will only be open for $\frac{1}{3}$ of that time. How much time will Mary Ann be able to shop?
- (a) $1\frac{1}{2}$ hours
 - (b) $1\frac{1}{3}$ hours
 - (c) $1\frac{2}{3}$ hours
 - (d) $1\frac{3}{4}$ hours

7) Shelly is about to simplify an expression. The expression is $\frac{4}{3}\left(\frac{7}{2}x - 3\right)$. What is the correct simplification of Shelly's expression?

- (a) $\frac{8}{3}x$
- (b) $\frac{14}{3}x - 4$
- (c) $\frac{21}{8}x - \frac{9}{4}$
- (d) $\frac{28}{6}x - \frac{12}{3}$

8) The morning temperature reading was 10° . If the temperature dropped 20° by mid-afternoon, what was the new temperature reading?

- (a) -10°
- (b) -20°
- (c) -30°
- (d) 30°

9) Simplify the following:

$$3(24 \div 4 - 2)$$

- (a) 12
- (b) 24
- (c) 36
- (d) 48

10) Solve for a .

$$a = \frac{3}{4} + \frac{5}{8}$$

- (a) $\frac{11}{8}$
- (b) $\frac{13}{8}$
- (c) $\frac{8}{4}$
- (d) $\frac{11}{4}$

11) Solve.

$$-23 - 8 = \underline{\quad}$$

- (a) -31
- (b) -15
- (c) $+15$
- (d) $+31$

12) Solve.

$$1\frac{3}{4} \div \frac{2}{3}$$

(a) $\frac{8}{21}$

(b) $1\frac{2}{12}$

(c) $2\frac{1}{8}$

(d) $2\frac{5}{8}$

13) Your school band is planning to attend a competition. The total cost for the sixty band members to attend is \$900. Each band member will pay \$4.00 toward this cost. They will sell boxes of candy to raise the rest of the money. For each box of candy sold the band makes \$3.00. How many boxes of candy will the band members need to sell?

- (a) 180
- (b) 220
- (c) 300
- (d) 380

14) If the average number of people who use the drive-up window is 23 per hour, how many people used the window in 7.5 hours?

- (a) 3
- (b) 30.5
- (c) 172.5
- (d) 355

15) Round $\frac{7}{40}$ to the nearest hundredth.

- (a) 0.175
- (b) 0.18
- (c) 0.21
- (d) 0.2

16) Mrs. Wilson bought a bag of licorice whips at the circus for her and her 4 children, and they ate all of the pieces in the bag. If the average amount of candy eaten by each of them was 7 pieces, how many pieces were in the bag?

- (a) 11
- (b) 24
- (c) 28
- (d) 35

17) What is the value of the following expression?

$$3 + 4^2 - 8 \times 2 + 4(1 + 2)$$

- (a) 9
- (b) 15
- (c) 31
- (d) 45

18) Bruce told his dad that he worked 15 hours at his weekend job and earned \$72.00. How much did Bruce earn per hour?

- (a) \$4.40
- (b) \$4.60
- (c) \$4.80
- (d) \$5.00

19) Solve.

$$\frac{1}{2}(18 + 2) + 2$$

- (a) 10
- (b) 12
- (c) 18
- (d) 20

20) If Sara correctly answered $\frac{3}{4}$ of the questions on her math test and there were a total of 60 questions on the test, how many questions did she *not* answer correctly?

- (a) 5
- (b) 11
- (c) 15
- (d) 22